

PRICE LIST 2023

About us

We are Andrea Flores and Lucía Soto.

We have worked designing together since 2010 and in 2014 we founded *Comité de Proyectos*. Company dedicated to interior design and furniture retail located in Mexico City.

What we enjoy most about our work is translating emotions and sensations into utilitarian objects and living spaces; that is, internalization. We like to create transcendent, durable and timeless pieces, with a contemporary style working in collaboration with craft workshops.

At *Comité de Proyectos* we study the relationship between individual and his spaces to obtain a deep understanding of the dynamics in each home or business. This allows us to reinterpret the vision of our customers, resulting in tailored design proposals. We believe in objects as cultural imprints and actors in the different planes that make up reality.

Together with our team of designers and artisans we have developed and produced more than 250 residential and commercial interior design projects, such as hotels, restaurants and coworkings, among other spaces.

We have developed four collections of sculptural objects that have been exhibited in museums and galleries in Mexico and Europe. We also have an extensive catalog of furniture for residential and commercial use.

Our thinking is a constant flow between the subjective and the functional, the craft and the market, technique and art.

INDEX

LINE FURNITURE

chairs and stools	.04 - .07
storage	.08
dining, coffee and side tables	.09
sofas and armchairs	.10 - .12
coat stands	.13
materials	.14 - .20

COLLABORATIONS

artelínea	.22 - .23
materials	.24
miscelánea	.25

TERMS AND CONDITIONS

.26 - .27

Prices in US dollars and VAT included. All products on this list are adjustable in dimensions and materials.

Thank you for writing to: catalogo@comitedeproyectos.mx for personalized quote requests.

CHAIRS & STOOLS



comité de proyectos



colima dining chair

Manufactured in solid wood, seat upholstered in Atlas, Atenea or Oliveto catalogs.

Dimensions 43cm x 50cm x 80.5cm

tzalam- oak	\$ 1, 304	USD
encino	\$ 1, 388	USD
walnut	\$ 1, 489	USD

*this chair is not manufactured in huanacastle wood.

*tzalam, oak, encino or walnut woods are recommended for commercial use.



lago chair (with armrest)

Manufactured in solid wood. Palm fiber back, seat upholstered in Atenea or Frisco catalogs.

Dimensions 58.5cm x 59cm x 82cm

huanacastle - tzalam - oak	\$ 1, 811.	USD
encino	\$ 1, 930.	USD
walnut	\$ 2, 111	USD

*huanacastle wood is not recommended for comercial use.



lago chair (without armrest)

Manufactured in solid wood. Palm fiber back, seat upholstered in Atenea or Frisco catalogs.

Dimensions 58.5cm x 59cm x 82cm

huanacastle - tzalam - oak	\$ 1, 733.	USD
encino	\$ 1, 919	USD
walnut	\$ 1, 997	USD

*huanacastle wood is not recommended for comercial use.



Iago woven chair (with armrest)

* NEW Product

Manufactured in solid wood.
Woven palm fiber seat and back.
Dimensions 53cm x 52cm x 82cm

huanacaxtle - tzalam - oak	\$ 1, 931	USD
encino	\$ 2,063	USD
walnut	\$ 2,355	USD

*huanacaxtle wood is not recommended for comercial use.



Iago woven chair (without armrest)

* NEW Product

Manufactured in solid wood.
Woven palm fiber seat and back.
Dimensions 48cm x 52cm x 82cm

huanacaxtle - tzalam - oak.	\$ 1, 885	USD
encino	\$ 2,039	USD
walnut	\$ 2,273	USD

*huanacaxtle wood is not recommended for comercial use.



colima low chair

Manufactured in solid wood. Wicker back and upholstered seat in Atenea or Malibu catalogs.
Dimensions 56cm x 60cm x 71.5cm

huanacaxtle - tzalam - oak	\$ 2,242	USD
encino	\$ 2,883	USD
walnut	\$ 2,928	USD

*all of the woods mentioned above are recommended for commercial use.



de la paz dining chair

*NEW Product

Manufactured in solid wood. Back and seat upholstered seat in Atlas or Atenea fabrics.
Dimensions 54 cm x 60.5 cm x 78 cm

Huanacaxtle - Roble	\$ 1, 896 USD
Tzalam	\$ 1, 978 USD
Encino - Nogal	\$ 2, 021 USD

*para uso comercial, se recomienda en cualquiera de las maderas mencionadas.



de la paz low chair

*NEW Product

Manufactured in solid wood. Back and seat upholstered seat in Copenhagen fabric
Dimensions 70.5 cm x 65.5 cm x 69 cm

Huanacaxtle - Roble	\$ 2, 153 USD
Tzalam	\$ 2, 243 USD
Encino - Nogal	\$ 2, 290 USD

*para uso comercial, se recomienda en cualquiera de las maderas mencionadas.



san francisco chair

*NEW Product

Manufactured in solid wood, electrostatic black painted metal. Cowhide seat with buckles.
Adjustable headrest cushion in cowhide with fur.
Dimensions 83cm x 89cm x 97cm

huanacaxtle - oak	\$ 6,204	USD
encino	\$ 6,456	USD
walnut	\$ 6,582	USD

*this chair is not manufactured in tzalam wood.

*all of the woods mentioned above are recommended for commercial use.

*production time for this chair is 8 - 10 weeks.



lago stool

Manufactured in solid wood, seat upholstered in Atenea or Frisco catalogs.

Bar height: 42cm x 48.5cm x 97cm

Counter height: 42cm x 48.5cm x 93cm

huanacaxtle - tzalam - oak	\$ 1, 694	USD
encino	\$ 1, 790	USD
walnut	\$ 2, 110	USD

*huanacaxtle wood is not recommended for comercial use.



colima stool

*NEW Product

Manufactured in solid wood, seat upholstered in Atenea or Oliveto catalogues.

Bar height: 42.5cm x 50.5cm x 96cm

Counter height: 42.5cm x 50.5cm x 100cm

tzalam - oak	\$ 1, 937.	USD
encino	\$ 2, 025	USD
walnut	\$ 2, 136	USD

*this chair is not manufactured in huanacaxtle wood.

*all of the woods mentioned above are recommended for commercial use.

STORAGE



comité de proyectos

providencia media cabinet



Manufactured in solid wood. Sliding doors and pull handles in dark blue powder-coated steel. Dimensions 180cm x 40cm x 60cm

huanacaxtle - oak
walnut

\$ 3,755 USD
\$ 3,783 USD

*this cabinet is not manufactured in tzalam

*huanacaxtle wood is not recommended for comercial use.

av. méxico sideboard



Manufactured in solid wood and wicker. Tikal marble top and brass pull handles. Dimensions 180cm x 55cm x 75cm

huanacaxtle - tzalam
encino - oak
walnut

\$.6,226 USD
\$ 6,634 USD
\$ 8,052 USD

dumas nightstand



Body made of wood veneer, legs made of solid wood. Wicker front and brass pull handles. Dimensions 58.5cm x 35cm x 45cm

huanacaxtle - tzalam
encino - oak
walnut

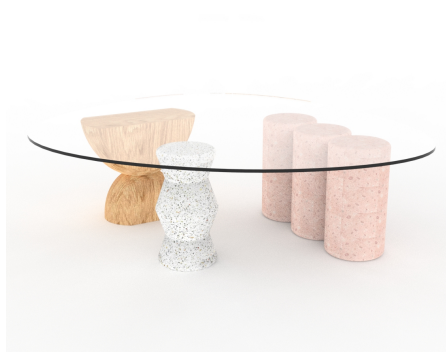
\$ 1,124 USD
\$ 1,206 USD
\$ 1,305 USD

DINING TABLES, COFFEE & SIDE TABLES



comité de proyectos

rosedal cantera coffee table



Solid oak wood, pink cantera stone and terrazo bases. Irregular, tempered clear glass tabletop.
Dimensions 122cm x 125cm x 38cm

with glass tabletop	\$ 7, 232.	USD
without glass tabletop (bases only)	\$ 3, 149	USD

*when purchasing bases only, Comité will share the necessary information with the client in order to provide the glass tabletop on site.

rosedal lava stone coffee table



Solid huanacastle wood and volcanic stone bases. Irregular, tempered clear glass tabletop.
Dimensions 122cm x 125cm x 38cm

with glass tabletop	\$ 5, 858	USD
without glass tabletop (bases only)	\$ 4, 317	USD

*when purchasing bases only, Comité will share the necessary information with the client in order to provide the glass tabletop on site.

de la paz table



Legs and tabletop manufactured in solid wood.
Dimensions 240cm x 110cm x 75cm

huanacastle - oak	\$ 7, 902	USD
walnut	\$ 14, 250	USD

* this table is not manufactured in tzalam wood.

SOFAS & ARMCHAIRS



citlal loveseat



Structure in solid wood. Upholstery in Atlas or Atenea fabric,
Sides in cowhide.

Dimensions 160cm x 90cm x 78cm

huanacaxtle - tzalam - oak	\$ 5,766	USD
encino	\$ 6,071	USD
walnut	\$ 7,210	USD

*huanacaxtle wood is not recommended for comercial use.

*does not include decorative pillows.

citlal sofa



Structure in solid wood. Upholstery in Atlas or Atenea fabric,
Sides in cowhide.

Dimensions 200cm x 90cm x 78cm

huanacaxtle - tzalam - oak	\$ 7,411	USD
encino	\$ 7,781	USD
walnut	\$ 8,798	USD

*huanacaxtle wood is not recommended for comercial use.

*does not include decorative pillows.

av. méxico ottoman



Light green powder coated steel structure.

Cushion upholstered with outdoor resistant Heritage
fabric or Atenea fabric for indoors.

Dimensions 80cm x 70cm x 44cm

\$ 1,626 USD

*furniture for roofed exteriors

*in case this furniture is placed in a roofed exterior, we recommend to apply covers
when it is not in use. (we can make a quote for such covers)

*heritage fabric is subject to availability



av. México armchair

Light green powder coated steel structure with solid wood details. Cushions upholstered with outdoor resistant Heritage fabric or Atenea fabric for indoors. Dimensions 83.5cm x 83cm x 76.5cm.

huanacaxtle - tzalam - oak - encino \$ 2, 196 USD

**furniture for roofed exteriors*
**in case this furniture is placed in a roofed exterior, we recommend to apply covers when it is not in use. (we can make a quote for such covers)*
**heritage fabric is subject to availability*
**does not include decorative pillows*



av. México loveseat

Light green powder coated steel structure with solid wood details. Cushions upholstered with outdoor resistant Heritage fabric or Atenea fabric for indoors. Dimensions 158.5cm x 83cm x 76.5cm

huanacaxtle - tzalam - oak - encino \$ 4, 001 USD

**furniture for roofed exteriors*
**in case this furniture is placed in a roofed exterior, we recommend to apply covers when it is not in use. (we can make a quote for such covers)*
**heritage fabric is subject to availability*
**does not include decorative pillows*



av. México sofa

Light green powder coated steel structure with solid wood details. Cushions upholstered with outdoor resistant Heritage fabric or Atenea fabric for indoors. Dimensions 233.5cm x 83cm x 76.5cm

huanacaxtle - tzalam - oak - encino \$ 5, 289 USD

**furniture for roofed exteriors*
**in case this furniture is placed in a roofed exterior, we recommend to apply covers when it is not in use. (we can make a quote for such covers)*
**heritage fabric is subject to availability*
**does not include decorative pillows*



guerrero armchair

Manufactured in solid wood and upholstered leather back. Seat and backrest in Atlas, Oliveto or Atenea fabric. Dimensions 77.5cm x 74cm x 74.5cm

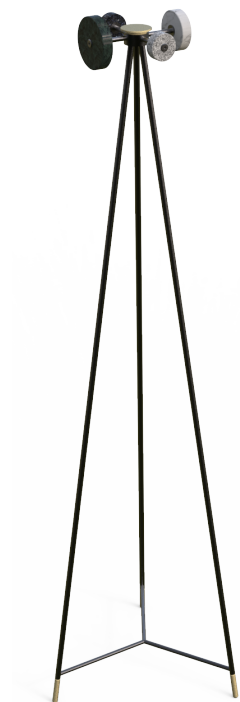
huanacastle - tzalam - oak	\$ 2, 704	USD
encino	\$ 2, 749	USD
walnut	\$ 3, 662	USD

*huanacastle wood is not recommended for comercial use.

COAT STANDS



comité de proyectos



marble coat stand

Black powder coated steel structure, brass details.
Circular pieces in Arabescato and Tikal marble,
Grissal and Ala de mosca granite.
Dimensions 40cm x 40cm x 145cm

\$ 2,066 USD



brass coat stand

Black powder coated steel structure with brass and
volcanic stone details.
Dimensions 40cm x 40cm x 145cm

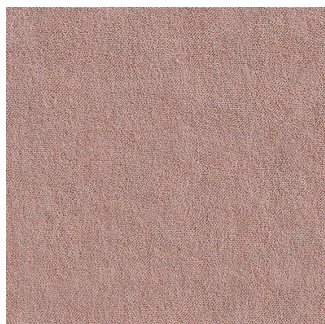
\$ 2,192 USD

MATERIALS

FABRICS



comité de proyectos



Malibu- Palo de Rosa



Oliveto - Beige



Oliveto - Oro



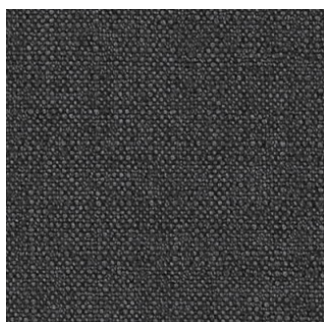
Oliveto - Siena



Oliveto - Verde



Oliveto - Marino



20 Shark - Atlas



23 Gull - Atlas

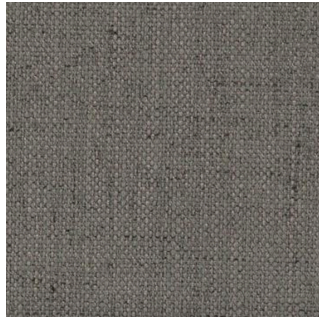


09 Flax - Atlas

FABRIC



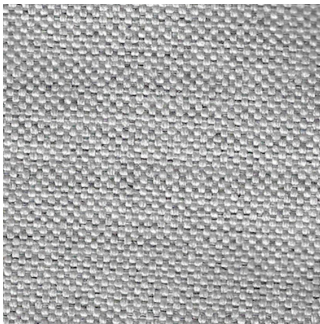
Frisco - Linen



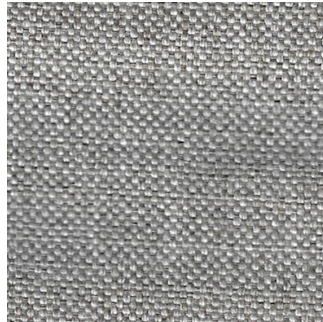
Frisco - Falcon



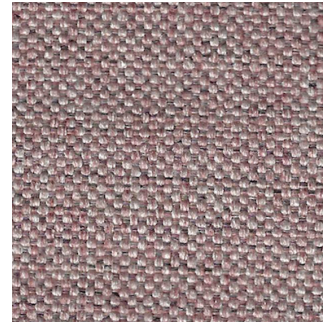
Frisco - Pewter



Atenea - Zinc



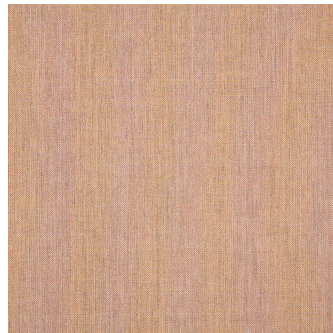
Atenea - Latte



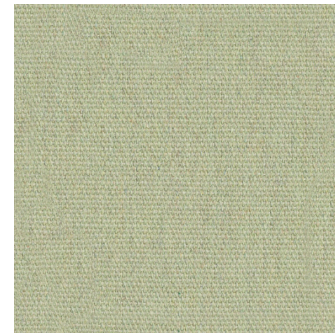
Atenea - Rose



Atenea - Navy



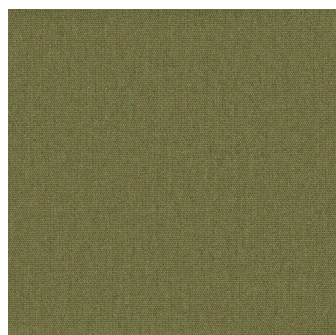
Heritage - Cast petal



Heritage - Moss



FABRIC



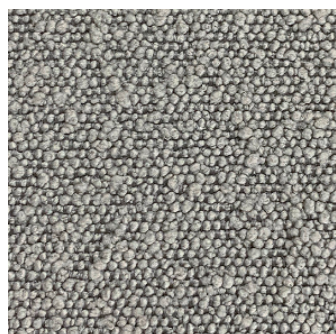
Heritage - Leaf



Heritage - Papyrus



Copenhagen - Natural



Copenhagen - Latte



Copenhagen - Cream



MATERIALS

LEATHER & COWHIDE



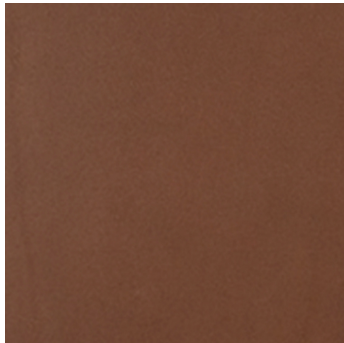
Cowhide with fur



Leather - Agave tequila



Cowhide - Manila



Cowhide - Sillero medium



Cowhide - Sillero miel



Cowhide - Sillero natural

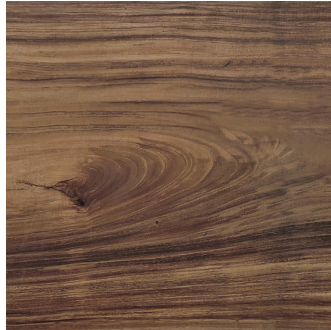
Natural materials such as wood, stone and leather tend to have variations in tone or grain.
Comité de Proyectos does not take any responsibility for these variations.

MATERIALS

WOOD



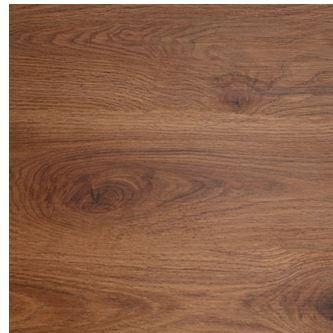
Oak Wood



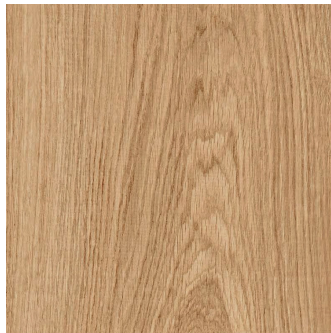
Huanacastle Wood



Tzalam Wood



Walnut Wood



Encino Wood



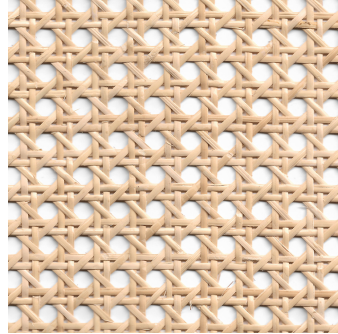
Natural materials such as wood, stone and leather tend to have variations in tone or grain.
Comité de Proyectos does not take any responsibility for these variations.

MATERIALS

WOVEN MATERIALS



Palm Fiber



Wicker

METALS



Brass



Matte Black Metal



Light Green Metal

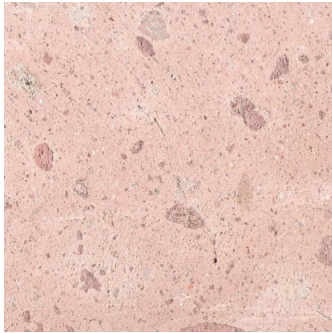


Matte Dark Blue Metal

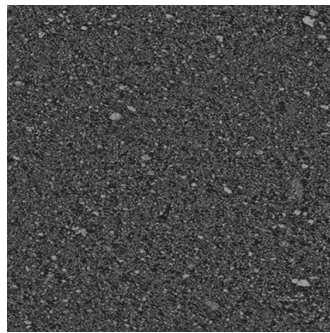


MATERIALS

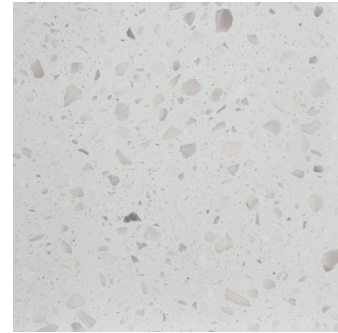
MARBLE AND STONES



Pink Cantera Stone



Recinto, Volcanic Stone



White Terrazo



Natural materials such as wood, stone and leather tend to have variations in tone or grain.
Comité de Proyectos does not take any responsibility for these variations.

COLLABORATIONS



orizaba horizontal

Manufactured with a combination of solid wood and wood veneer, dark grey Valchromat and anodized aluminum bars in titanium color.
Dimensions 140cm x 32cm x 82cm

huanacaxtle - oak	\$ 3, 340	USD
walnut	\$ 3, 924	USD



orizaba tall

Manufactured with a combination of solid wood and wood veneer, dark grey Valchromat and anodized aluminum bars in titanium color.
Dimensions 90.5cm x 32cm x 195cm

huanacaxtle -oak	\$ 3, 541	USD
walnut	\$ 4, 164	USD



orizaba staggered

Manufactured with a combination of solid wood and wood veneer, dark grey Valchromat and anodized aluminum bars in titanium color.
Dimensions 150cm x 32cm x 150cm

huanacaxtle - oak	\$ 3, 431	USD
walnut	\$ 4, 136	USD



toledo armchair

Manufactured in solid wood and wicker back.
Upholstery in Dunas or Atenea fabric.
Decorative pillow in Agave tequila leather.
Dimensions 80cm x 69.5cm x 71.5cm

huanacaxtle -oak	\$ 2, 578	USD
encino	\$ 2, 969	USD
walnut	\$ 3, 266	USD

MATERIALS



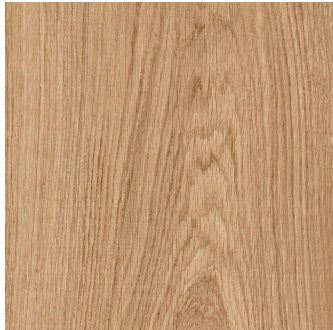
Oak Wood



Huanacastle Wood



Walnut Wood



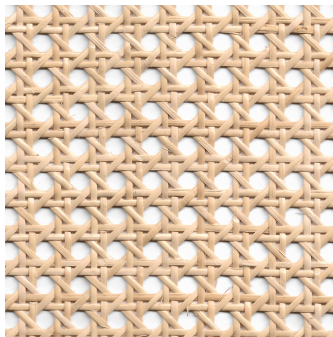
Encino Wood



Leather- Agave tequila



Dunas Musgo Fabric



Wicker



Dark Gray Valchromat

Natural materials such as wood, stone and leather tend to have variations in tone or grain.
Comité de Proyectos does not take any responsibility for these variations.



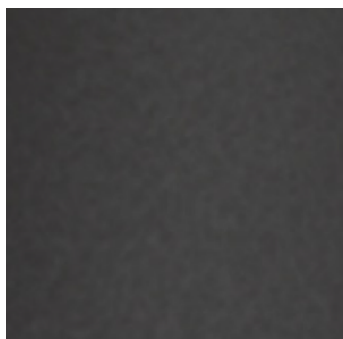
anafre

Glazed ceramic in matte black and bone-white.
Includes a metal comal.
Dimensions 31cm x 24cm x 16cm

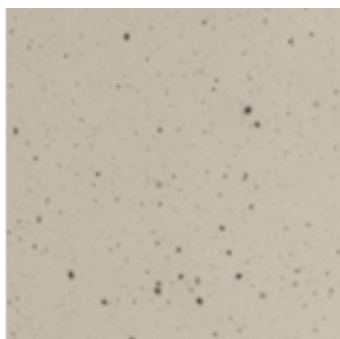
\$ 245

USD

MATERIALS



Black glaze



Bone-White glaze

TERMS AND CONDITIONS

We strive to select the highest quality materials and to deliver furniture manufactured by highly qualified artisans. Customer satisfaction is of utmost importance to us.

If there were a problem with your order, please contact us at: *catalogo@comitedeproyectos.mx*
or *WhatsApp +52 5624454210*

Payment methods

Via bank transfer to our checking account in US dollars:

Somos Materia S. A de C.V.
Gobernador Luis G. Vieyra 38-2. Colonia San Miguel Chapultepec
11850, Miguel Hidalgo, CPMX, México

BBVA Bancomer
Branch bank: 1714 BBVA Mexico / SWIFT Code: BCMRMXMMPYM.
Account Number: 0117454422 / CLABE: 012180001174544228

Intermediary Bank: J.P. Morgan Chase Bank N.Y.
Code: ABA021000021 / SWIFT Code: CHASUS33

Or vía PayPal:

<https://paypal.me/comitedeproyectos>
(3.65% additional commission fee to be considered)

You can buy our products directly on our website
www.comitedeproyectos.mx
and also on the 1st dibs platform
1stdibs.com/dealers/comite-de-proyectos

Pricing and Shipping

The prices in this catalog include delivery in Mexico City at street level.
For shipments outside of Mexico City we can support you by quoting a delivery service.

Customized products

The products in this catalog can be customized in terms of materials and in some cases measurements. We can provide different materials, fabrics, colors and finishes.

Please contact us at *catalogo@comitedeproyectos.mx* for further information.

Leading time

Our lead time for catalogue products is 6-8 weeks. For furniture with measurement or material modifications the lead time will be confirmed after validating the new design with the client.

Returns and exchanges

Because we do not have stock and each piece is made by order, we do not accept returns nor exchanges.

Please review your purchase upon delivery. If an item is damaged we will work with you to solve the problem.

It is important to consider that wood, stone and leather are natural materials that tend to have variations in tone or grain, therefore we do not take any responsibility for such variations.

Sales information

If you are a distributor, and require further information, you can contact us at:

catalogo@comitedeproyectos.mx

If you are designer or architect and you would like to use our products in your projects, please contact us at: *ventas@comitedeproyectos.mx*

Warranties

All our furniture is guaranteed for 12 months against any manufacturing defect.

Contact

Website

www.comitedeproyectos.mx

Sales

Catalogue executive: catalogo@comitedeproyectos.mx

Projects & interior design executive: ventas@comitedeproyectos.mx

General information

info@comitedeproyectos.mx

Whatsapp: +52 1 56 2445 4210

Office: *52 55 8952 8089

Social media accounts

IG: [@cpmx](#)

Facebook: [@comitedeproyectos](#)

Pinterest: [@comitedeproyectos](#)

Thank you!